

BoilerMaestro™

ARE YOUR BOILERS PERFORMING AS THEY SHOULD?

Monitoring has shown us that boilers very often do not achieve their full potential. This wastes money and results in a less satisfied customer. In one case, a boiler owner has complained that his biomass boilers spent too little time heating and his “backup” boiler was used too much.

The following issues hinder boiler performance:

1. Short cycling
2. Lack of coordination of the boilers
3. Sluggish response to loads
4. Erratic boiler circulator behavior (sometimes turning off or oscillating during heating periods)

Result: less comfort and higher fuel costs

BOILER OWNERS CARE about boiler performance.

A survey of attendees at the New Hampshire Biomass Boiler Operators Workshop showed that boiler performance was by far their **#1 CONCERN**.

DCM LOGIC'S SOLUTION—The BoilerMaestro

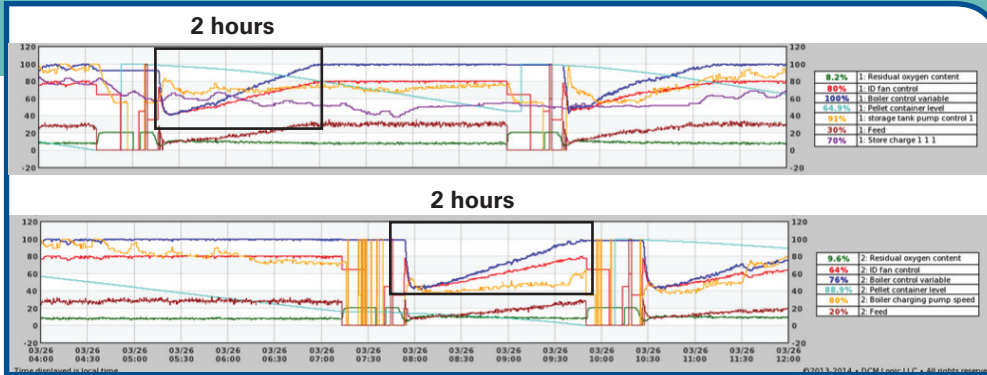
The **BoilerMaestro** controls the operation of the boiler plant (ensembles of one to eight boilers) to operate at the desired tempo and at the highest efficiency.

The **BoilerMaestro** maximizes the readiness of boilers to meet new load demands. By quickly ramping up the biomass boilers, the Boilermaestro minimizes the need to burn expensive fossil fuel.

The Benefits:

- Nearly Plug-and-Play automatic setup of boiler parameters. (No more technician trial and error dragging on for months or more.)
- Drastic reduction or elimination of the need for thermal storage in the biomass system, dramatically reducing installation costs.
- A more comfortable customer with lower backup fuel costs.
- Longer life for boiler components due to sharply reduced short cycling.
- Actual documentation of real-world performance with DCM Logic's BoilerBrowser™.

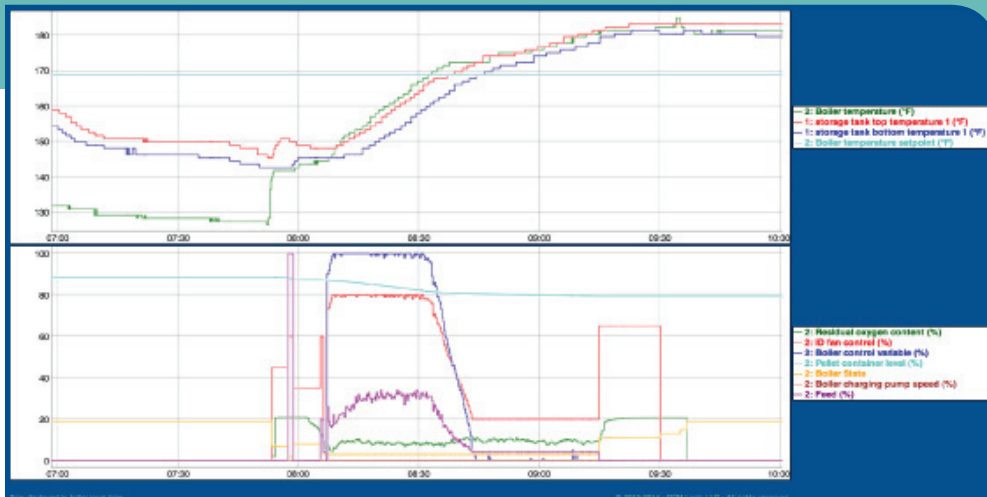
With Manufacturer's Controls...



Sluggish response

- Boilers take almost 2 hours to reach 100% output
- Short cycling

With the BoilerMaestro in Control...



Quick response

- Just one boiler comes on, ramps to 100% to rapidly satisfy a load, then modulates down to await the next load
- Response time to reach 100% boiler control variable about 15 minutes versus 2 hours before
- No short cycling

FOCUS ON THE MISSION, GET BACK TO BASICS

“Efficiency” and “ease of use” are the current marketing buzzwords for biomass boilers. “High efficiency” sounds good, but it refers to steady-state efficiency, which has limited relevance for real-world operation. “Ease of use” is nice as well, but isn’t the primary function of a boiler. In our opinion, the core function of a boiler plant is to deliver a certain temperature to the distribution system reliably and efficiently, in a real world situation. The boiler manufacturer who can achieve and document this result will have a major advantage over its competitors. The **BoilerMaestro** gives you this advantage.

CONTACT US FOR MORE INFORMATION



www.dcmlogic.com
603-283-9184
info@dcmlogic.com